

Ministry of Education and Child Care

Budget 2024 Overview

February 2024

Table of Contents

Budget 2024 Funding Announcements (3-Year Total)..... 2
Budget 2024 Operating Funding Announcements (3-Year Total)..... 4
Budget 2024 Capital Funding Announcements (3-Year Total)..... 5
Appendix A - Resource Summary and Major Capital Projects..... 9
Appendix B - Comparison of 2024/25 Budget to Prior Year (\$000) 14

Budget 2024 Funding Announcements (3-Year Total)

Ministry of Education and Child Care

\$ Billions	2024/25	2025/26	2026/27	TOTAL
<i>Budget 2023</i> Operating Budget	9.133	9.172	9.172	27.476B
<i>Budget 2024</i> Funding Lifts ¹	0.482	0.495	0.495	1.473B
Operating Budget	\$9.615B	\$9.667B	\$9.667B	\$28.949B
Capital Budget	\$1.046B	\$1.363B	\$1.343B	\$3.752B

¹Please note *Budget 2024* 3-year funding lift added reflect \$.001B rounding discrepancy.

Key Messages

- *Budget 2024* provides an additional \$1.473 billion in operating funds for the ministry over three years. This includes:
 - \$650.8M for actual and projected enrolment growth in public schools;
 - \$301.9M to fund public school wage lifts related to the 2022 Shared Recovery Mandate (SRM) for Cost of Living Adjustment (COLA) and Management/Excluded Compensation for SY 2023/24;
 - \$254.5M in funding under the Classroom Enhancement Fund (CEF);
 - \$219.7M for independent schools to fund enrolment and associated increases related to the 2022 SRM costs for public schools;
 - \$30.3M for Learning Supports – more to come later this Spring;
 - \$5.3M to fund ratified SRM costs for Child Care Community Social Services organizations;
 - \$6.7M to fund Ministry Administration (K-12 and Child Care) salary and benefit costs related to the 2022 Shared Recovery Mandate COLA and Management/Excluded Compensation approved for FY 2023/24;
 - \$4.2M to fund Children and Youth with Support Needs School Outreach Teams related to Budget 2023; and
 - \$.5M net reduction for the *Teachers Act* Special Account due to savings anticipated for ongoing operational costs.
- *Budget 2024* also includes \$3.752B in capital funding for the K-12 sector over the next three years (increase of \$799M compared to the three-year outlook announced in Budget 2023). This funding includes:
 - \$2.262B to invest in Expansion and Replacement projects (up \$741M from B2023);
 - \$775M to accelerate the Seismic Mitigation Program (up \$12M from B2023); and
 - \$715M to invest in asset rehabilitation and maintenance (up \$46M from B2023).

Ministry of Education and Child Care - Budget 2024

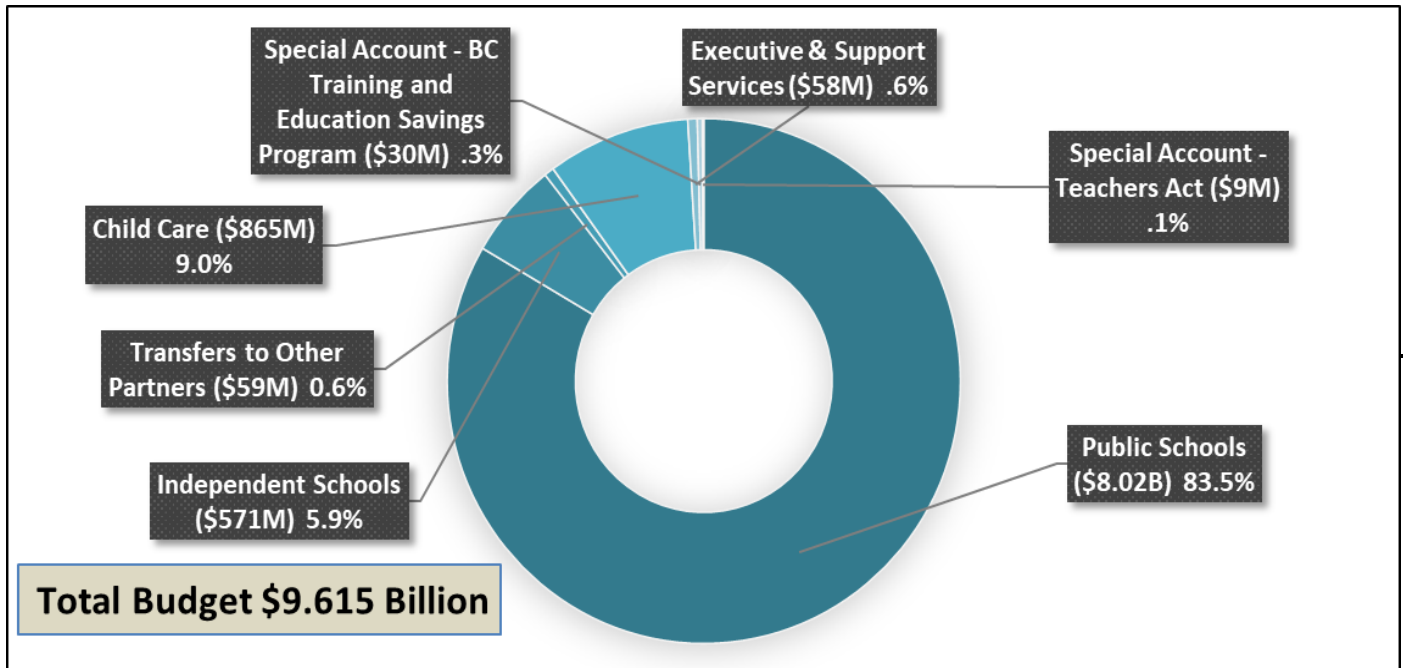
K-12 Education (including Special Accounts)

\$ Billions	2024/25	2025/26	2026/27	TOTAL
<i>Budget 2023 Operating Budget</i> ¹	8.270	8.308	8.308	24.887B
<i>Budget 2024 Funding Lifts</i> ¹	0.480	0.493	0.493	1.465B
Operating Budget	\$8.750B	\$8.801B	\$8.801B	\$26.352B
Capital Budget	\$1.046B	\$1.363B	\$1.343B	\$3.752B

¹Please note *Budget 2023* and *Budget 2024* 3-year funding lift added reflect \$.001B rounding discrepancy.

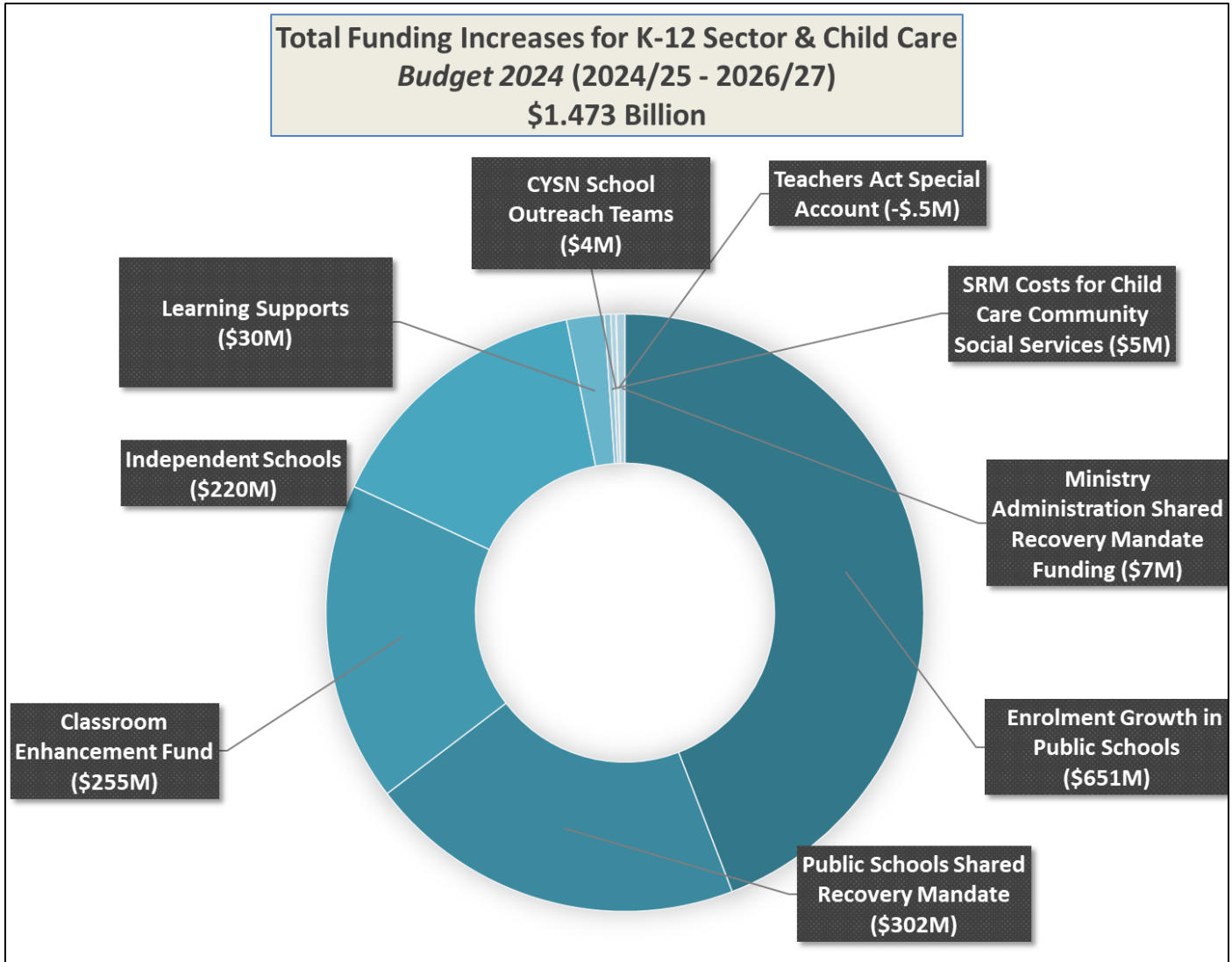
Child Care (including sub-vote and Minister of State)

\$ Billions	2024/25	2025/26	2026/27	TOTAL
<i>Budget 2023 Operating Budget</i>	0.863	0.863	0.863	2.589B
<i>Budget 2024 Funding Lifts</i>	0.002	0.003	0.003	0.008B
Operating Budget	\$0.865B	\$0.866B	\$0.866B	\$2.597B



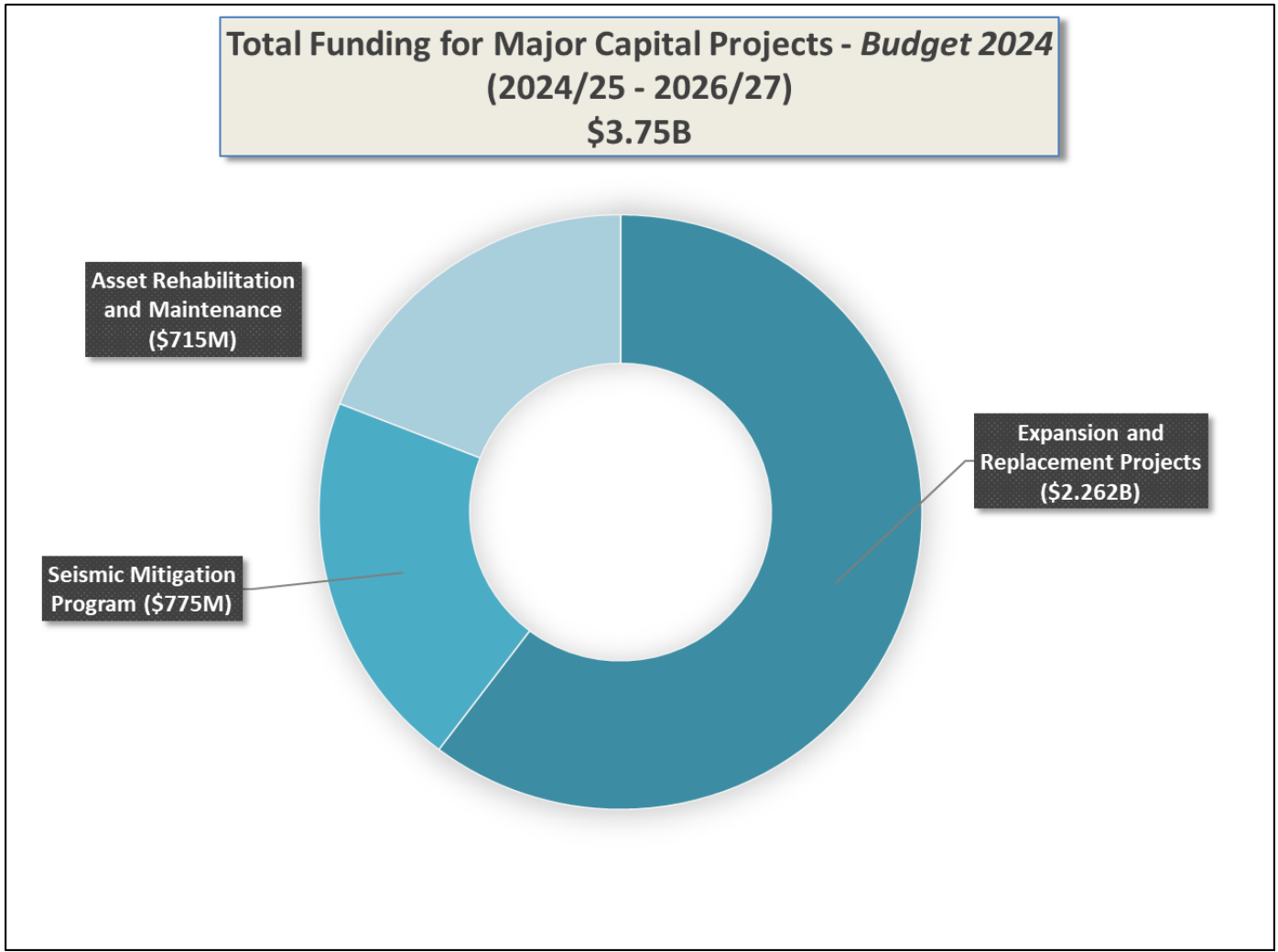
Budget 2024 Operating Funding Announcements (3-Year Total)

- BC's total operating budget for the Ministry is **\$9.615B** in 2024/25.
- *Budget 2024* provides the Ministry a **\$1.473B** lift in operating funding over 3 years.



Budget 2024 Capital Funding Announcements (3-Year Total)

- BC’s total capital budget for the Ministry is **\$1.046B** in fiscal year 2024/25
- Budget 2024’s **\$3.752B** in capital funding over 3 years includes:
 - \$2.262B to invest in Expansion and Replacement projects;
 - \$775M to accelerate the Seismic Mitigation Program; and
 - \$715M to invest in asset rehabilitation and maintenance.



K-12 Capital Budget

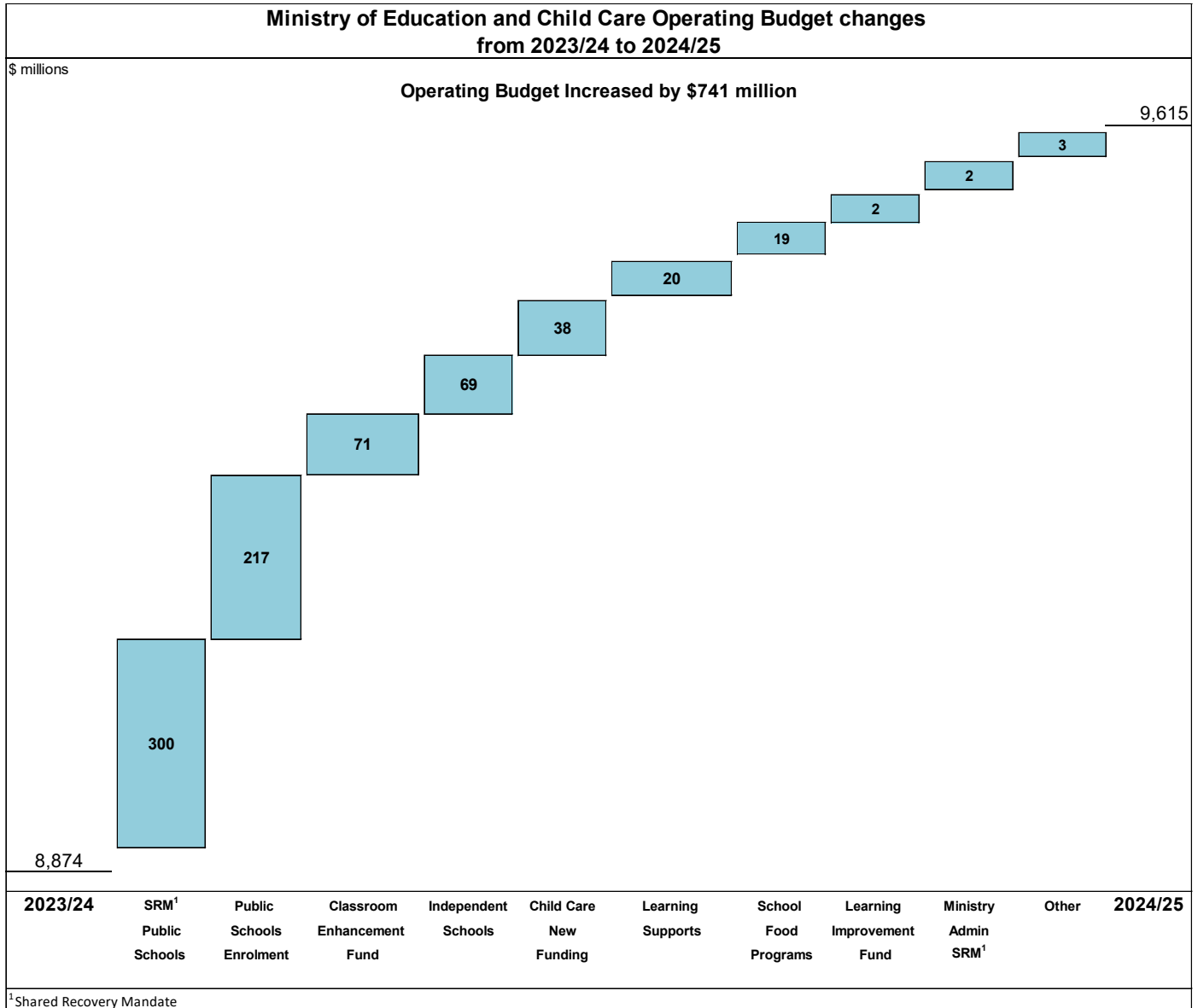
\$Million	2024/25	2025/26	2026/27	3-year total
Total Capital Budget in K-12 ¹ (taxpayer supported)	\$1,183M	\$1,494M	\$1,481M	\$4.16B
Provincially funded	\$1,046M	\$1,363M	\$1,343M	\$3.75B

¹ Current forecast as of December 31, 2023

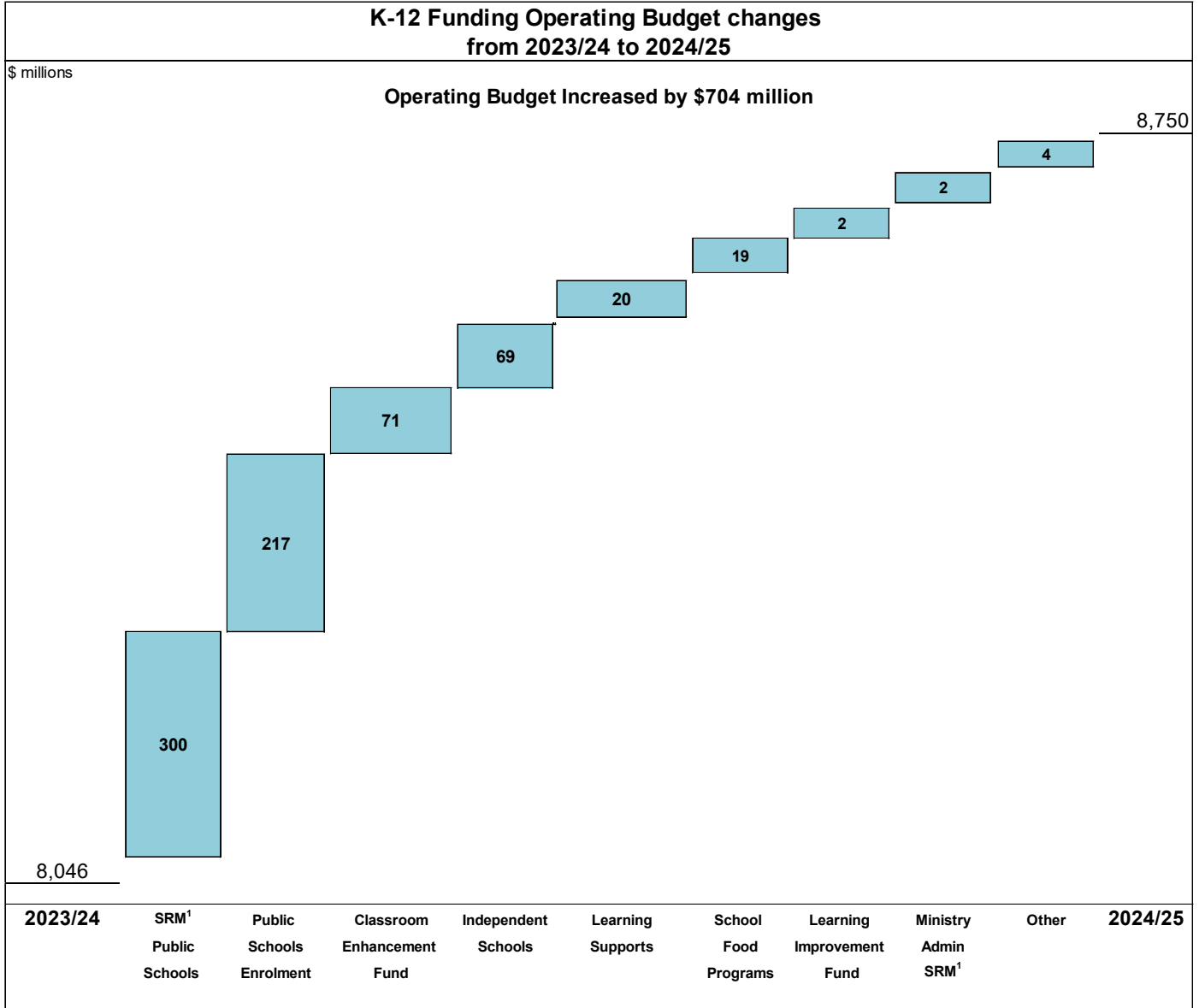
Ministry of Education and Child Care - Budget 2024

2023/24 to 2024/25 Operating Budget Changes

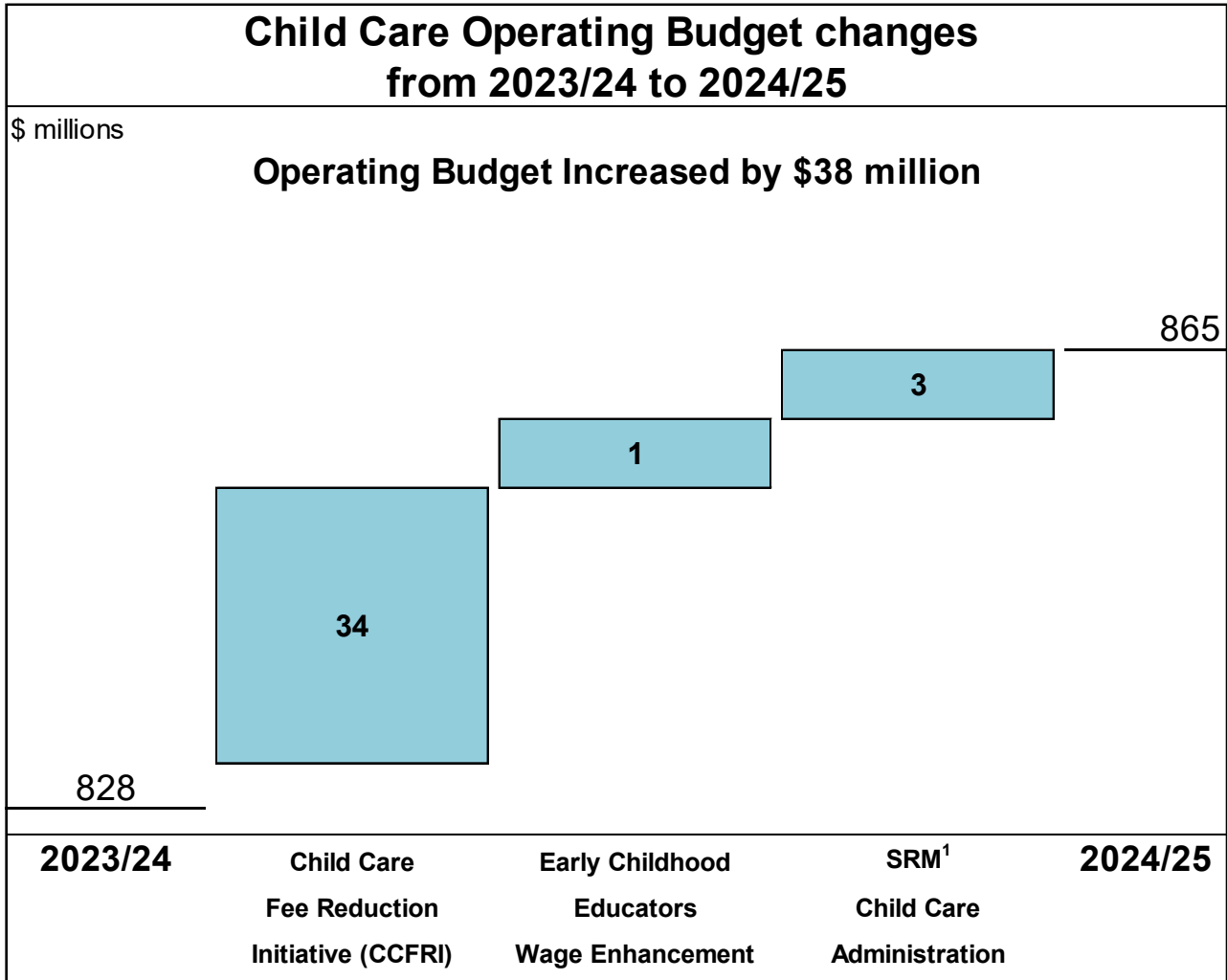
Includes funding lifts from *Budget 2024*, as well as other funding changes from previous Budgets.



Ministry of Education and Child Care - Budget 2024



¹Shared Recovery Mandate



¹Shared Recovery Mandate

Appendix A - Resource Summary and Major Capital Projects

The Resource Summary is the Ministry's three-year budget plan as presented in the Service Plan.

Core Business Area	2023/24 Restated Estimates ¹	2024/25 Estimates	2025/26 Plan	2026/27 Plan
Operating Expenses (\$000)				
Public Schools	7,391,494	8,023,617	8,071,422	8,071,322
Independent Schools	498,977	571,217	575,523	575,523
Transfers to Other Partners	61,638	59,053	58,868	58,868
Child Care	827,377	865,255	865,255	865,255
Executive and Support Services	55,666	57,639	57,139	57,139
British Columbia Training and Education Savings Program Special Account	30,001	30,001	30,001	30,001
<i>Teachers Act</i> Special Account	8,817	8,600	8,672	8,840
Total	8,873,970	9,615,382	9,666,880	9,666,948
Ministry Capital Expenditures (Consolidated Revenue Fund) (\$000)				
Executive and Support Services	3	3	3	3
Capital Plan (\$000)				
Public Schools	864,898	1,046,194	1,362,769	1,343,357

Ministry of Education and Child Care - Budget 2024

Previously announced Capital Projects

Major Capital Projects (over \$50 million)	Targeted Year of Completion	Project Cost to Mar 31, 2023 (\$m)	Estimated Cost to Complete (\$m)	Approved Anticipated Total Cost (\$m)
Burke Mountain Middle/Secondary	2026	9	151	160
Under the ministry's Expansion Program, School District No. 43 (Coquitlam) is building a new 1,000 - student capacity middle/secondary school with a Neighborhood Learning Centre, in Coquitlam's growing Burke Mountain community. Enrolment in this part of the Coquitlam School District has grown substantially in recent years, and the new school will alleviate pressures at other district schools. The total potential budget for the new school is \$160 million and it is scheduled for occupancy in 2026.				
Burnaby North Secondary	2023	99	9	108
Under the ministry's Seismic Mitigation Program, School District No. 41 (Burnaby) is building a replacement 1,800-student-capacity secondary school on its current site located in Burnaby North. The total potential budget for the replacement school is \$108 million and it is occupied with additional work continuing.				
Carson Elementary	2026	0	61	61
Under the ministry's replacement program, School District No. 28 (Quesnel) is completing a replacement 390-student capacity school with low carbon design and a neighbourhood learning centre, located in Quesnel. It is estimated that the replacement school will cost \$61 million and is scheduled for occupancy in 2026.				
Cedar Hill Middle	2025	6	48	54
Under the ministry's Seismic Mitigation Program, School District No. 61 (Greater Victoria) is building a 575-student capacity low carbon replacement school in the Cedar Hill neighbourhood. Work is under way, and it is estimated that the replacement school will cost \$54 million and is scheduled for occupancy in 2025.				
Centennial Secondary	2017	59	2	61
Under the ministry's Seismic Mitigation Program, School District No. 43 (Coquitlam) completed a seismic replacement of the existing Centennial Secondary with a 1,250-student-capacity school on its current site located in Coquitlam. It is estimated that the replacement school will cost \$61 million, and although being occupied since 2017, it is scheduled for final completion in 2024.				
New Cloverley Elementary School	2026	1	63	64
Under the ministry's Expansion Program, School District No. 44 (North Vancouver) is building a new 585-student-capacity elementary school with a Neighborhood Learning Centre in the growing Cloverley neighbourhood. The total potential budget for the new school is \$64 million, and it is scheduled for occupancy in 2026.				

Ministry of Education and Child Care - Budget 2024

Major Capital Projects (over \$50 million)	Targeted Year of Completion	Project Cost to Mar 31, 2023 (\$m)	Estimated Cost to Complete (\$m)	Approved Anticipated Total Cost (\$m)
Coast Salish Elementary	2023	26	17	43
Under the ministry's Expansion Program, School District No. 43 (Coquitlam) is building a new 430 - student capacity elementary school with a Neighborhood Learning Centre, in Coquitlam's growing Burke Mountain community. Enrolment in this part of the Coquitlam School District has grown substantially in recent years, and the new school will alleviate pressures at other district schools. The total potential budget for the new school is \$43 million and it has been occupied since 2023, with additional work continuing on the NLC.				
Cowichan Secondary	2024	56	30	86
Under the ministry's Seismic Mitigation Program, School District No. 79 (Cowichan Valley) is building a replacement 1100-student-capacity secondary school on its current site, located in Cowichan Valley. The total potential budget for the replacement school is \$86 million and it is scheduled for occupancy in 2024.				
New East Side Elementary	2026	0	59	59
Under the ministry's Expansion Program, School District No. 33 (Chilliwack) is completing a new 500-student capacity elementary school with low carbon design and a neighbourhood learning centre in the growing community of Chilliwack. The total potential budget for the new school is \$59 million and it is scheduled for occupancy in 2026.				
Eric Hamber Secondary	2024	82	24	106
Under the ministry's Seismic Mitigation Program, School District No. 39 (Vancouver) is building a replacement 1,700-student-capacity secondary school on its current site located in Vancouver. The total potential budget for the replacement school is \$106 million and it is scheduled for occupancy in 2024.				
Grandview Heights Secondary	2021	79	4	83
Under the ministry's Expansion Program, School District No. 36 (Surrey) is completing a new 1,500-student capacity secondary school in the Grandview neighbourhood in Surrey. Enrolment in this part of the Surrey School District has grown substantially in recent years, with the new school alleviating pressures at other district secondary schools, particularly Earl Marriot Secondary and Semiahmoo Secondary. The total potential budget for the new school is \$83 million, and it has been occupied since 2021 with only trailing costs remaining.				
Guildford Park Secondary	2028	0	65	65
Under the ministry's Expansion Program, School District No. 36 (Surrey) is completing an addition to increase capacity from 1,050 to 1,500 students, to help accommodate recent growth in the community. The addition will incorporate greenhouse gas-reduction measures and include a neighbourhood learning centre. The total potential budget for the addition is \$65 million and it is scheduled for occupancy in 2028.				

Ministry of Education and Child Care - Budget 2024

Major Capital Projects (over \$50 million)	Targeted Year of Completion	Project Cost to Mar 31, 2023 (\$m)	Estimated Cost to Complete (\$m)	Approved Anticipated Total Cost (\$m)
Handsworth Secondary	2022	67	2	69
Under the ministry's Seismic Mitigation Program, School District No. 44 (North Vancouver) is completing a replacement 1,400-student-capacity secondary school on its current site located in North Vancouver. The total potential budget for the replacement school is \$69 million, and it has been occupied since 2022 with only trailing costs remaining.				
La Vallee (Pemberton) Elementary	2027	0	66	66
Under the ministry's expansion program, School District No. 93 (Conseil scolaire francophone) is completing a new 220 capacity K-12 school with low carbon design, mass timber elements and a neighbourhood learning centre in Pemberton, to support existing and forecast enrolment growth in the community. The total potential budget for the new school is \$66 million and it is scheduled for occupancy in 2027.				
New Westminster Secondary	2021	95	12	107
Under the ministry's Replacement Program, School District No. 40 (New Westminster) is completing a replacement 1,900-student-capacity secondary school on its current site located in New Westminster. It is estimated that the replacement school will cost \$107 million, and it has been occupied since 2021 with additional work continuing.				
North East Latimer Elementary	2025	1	51	52
Under the ministry's Expansion Program, School District No. 35 (Langley) is building a new 555-student-capacity elementary school with a Neighborhood Learning Centre in the growing Willoughby area. The total potential budget for the new school is \$52 million, and it is scheduled for occupancy in 2026.				
Pexsisen Elementary and Centre Mountain Lellum Middle	2022	89	0	89
Under the ministry's Expansion Program, School District No. 62 (Sooke) is completing a new 500-student-capacity elementary school and a 700-student-capacity middle school in Sooke's growing West Langford community. Enrolment in this part of the School District has grown substantially in recent years, and the new schools will alleviate pressures at other district schools. The total potential budget for the new schools is \$89 million, and they have been occupied since 2022 with only trailing costs remaining.				
Pineview Valley Elementary	2026	1	64	65
Under the ministry's Expansion Program, School District No. 73 (Kamloops-Thompson) will deliver a new 485 capacity elementary school. Enrolment in this part of the School District has grown substantially in recent years, and the new school will alleviate pressures at other district schools. The total potential budget for the new school is \$65 million and it is scheduled for occupancy in 2026.				

Ministry of Education and Child Care - Budget 2024

Major Capital Projects (over \$50 million)	Targeted Year of Completion	Project Cost to Mar 31, 2023 (\$m)	Estimated Cost to Complete (\$m)	Approved Anticipated Total Cost (\$m)
Prince Rupert Middle	2027	0	127	127
Under the ministry's Seismic Mitigation Program, School District No. 52 (Prince Rupert) is completing a replacement 600-student-capacity middle school on its current site located in Prince Rupert. The new school will incorporate greenhouse gas-reduction measures and include a neighbourhood learning centre. It is estimated that the replacement school will cost \$127 million and is scheduled for occupancy in 2027.				
Quesnel Junior School	2022	47	5	52
Under the ministry's Replacement Program, School District No. 28 (Quesnel) is completing a replacement 550-student-capacity senior middle on its current site located in Quesnel. It is estimated that the replacement school will cost \$52 million, and it has been occupied since 2022 with only trailing costs remaining.				
Stitó:s Lá:lém totí:lt Elementary Middle	2022	52	2	54
Under the ministry's Expansion Program, School District No. 33 (Chilliwack) is completing a new 930-student capacity elementary-middle school in Chilliwack's growing South Side community. Enrolment in this part of the Chilliwack School District has grown substantially in recent years, and the new school will alleviate pressures at other district schools. The total potential budget for the new school is \$54 million and it has been occupied since 2022 with only trailing costs remaining.				
Tamanawis Secondary	2028	0	57	57
Under the ministry's Expansion Program, School District No. 36 (Surrey) is completing an addition to increase capacity from 1,125 to 1,700 students, to help accommodate recent growth in the community. The addition will incorporate greenhouse gas-reduction measures and include a neighbourhood learning centre. The total potential budget for the addition is \$57 million and it is scheduled for occupancy in 2028.				
Victoria High School	2024	93	7	100
Under the ministry's Seismic Mitigation Program, School District No. 61 (Greater Victoria) is seismically upgrading and expanding the existing, historic high school on its current site located in Greater Victoria. The total potential budget for the seismic upgrade and expansion project is \$100 million, and it is scheduled for occupancy in 2024.				
George Pringle Secondary (formerly Westside Secondary)	2027	8	116	124
Under the ministry's Expansion Program, School District No. 23 (Central Okanagan) is building a new 1,200-student-capacity secondary school with a Neighborhood Learning Centre in the Westside area of Kelowna. The total potential budget for the new school is \$124 million, and it is scheduled for occupancy in 2027.				

Appendix B - Comparison of 2024/25 Budget to Prior Year (\$000)

	2023/24 Estimates (Restated)¹	2024/25 Estimates	Change \$	Change %
Public Schools	7,391,494	8,023,617	632,123	8.55%
Independent Schools²	498,977	571,217	72,240	14.48%
Transfers to Other Partners³	61,638	59,053	(2,585)	(4.19%)
Child Care	827,377	865,255	37,878	4.58%
Executive and Support Services	55,666	57,639	1,973	3.54%
Ministry Operations	8,835,152	9,576,781	741,629	8.39%
BC Training and Education Savings Program Special Account⁴	30,001	30,001	0	0.00%
Teachers Act Special Account	8,817	8,600	(217)	(2.46%)
Total	8,873,970	9,615,382	741,412	8.35%

¹Note, figures for 2024/25 represent amounts from 2024/25 Estimates. They are not necessarily representative of actual Ministry of Education and Child Care's investment for 2024/25.

²Independent Schools \$72M increase includes both 2023/24 and 2024/25 funding impacts of public school wage lifts.

³Transfers to Other Partners reduction mainly related to 2023/24 one-time funding approved for School Food Programs offset by an increase to Future Ready.

⁴The 2024/25 budget in the Special Account is intended to represent the expected uptake of the program by children born in 2018. When estimates on program uptake are revised, this amount may increase during the fiscal year.