

Safety Awareness for Fire Damaged Trees

Not all burnt trees are dangerous.

Take the time to look for the signs of damage

If unsure have a certified Danger Tree Assessor review the upslope hazards to make a plan to reduce rock and tree hazards.

For assistance contact your local government to inquire if there are hazard mitigation support that can assist in removal of hazards.

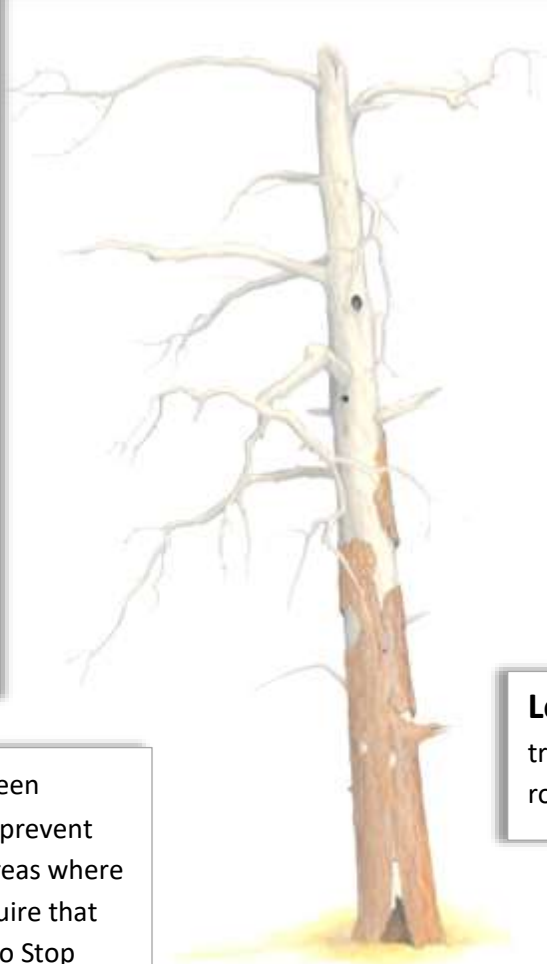
No Work Zones may have been installed to prevent exposure to prevent exposure to upslope hazards. Areas where No Work Zones are installed require that habits to minimize risk such as No Stop Areas for road travel.

These areas may require a additional assessment of upslope hazards.

Damage to Aspen

Defoliation as well as fire damage to the bark at the base of Aspen trees will result in mortality.

Aspen trees become dangerous and begin to fall apart in 2 years. It is recommended these trees are felled safely prior to advanced decay.



Forest disturbance from fire can leave many hazards that can linger for a long time.

It is important to carefully assess your property for tree hazards created from a weakened or recently fire killed tree. Very often these hazards fall in high wind events however they can also fall unexpectedly with little warning.

Hung up trees can become dislodged during windy conditions.

Avoid travel in recently burned areas when it is windy.

Look up and check for damaged tops of trees that can have loose branches or rotten cavities that can fail in winds

